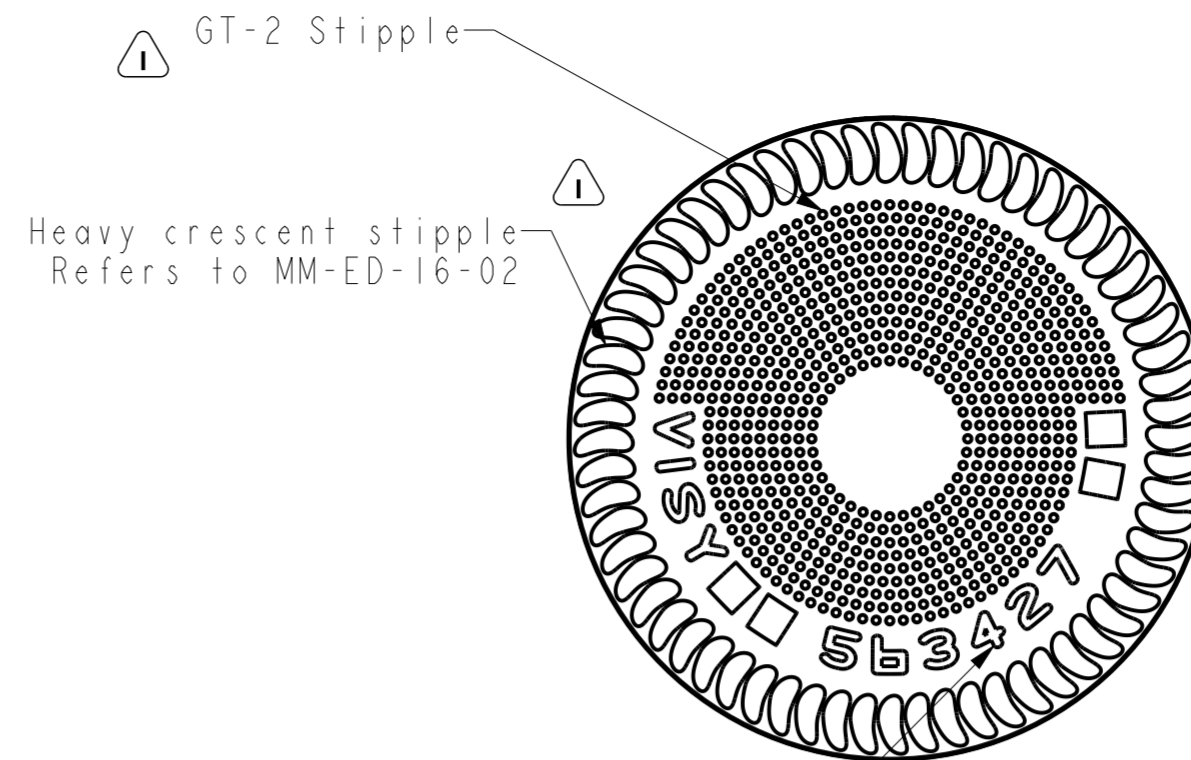
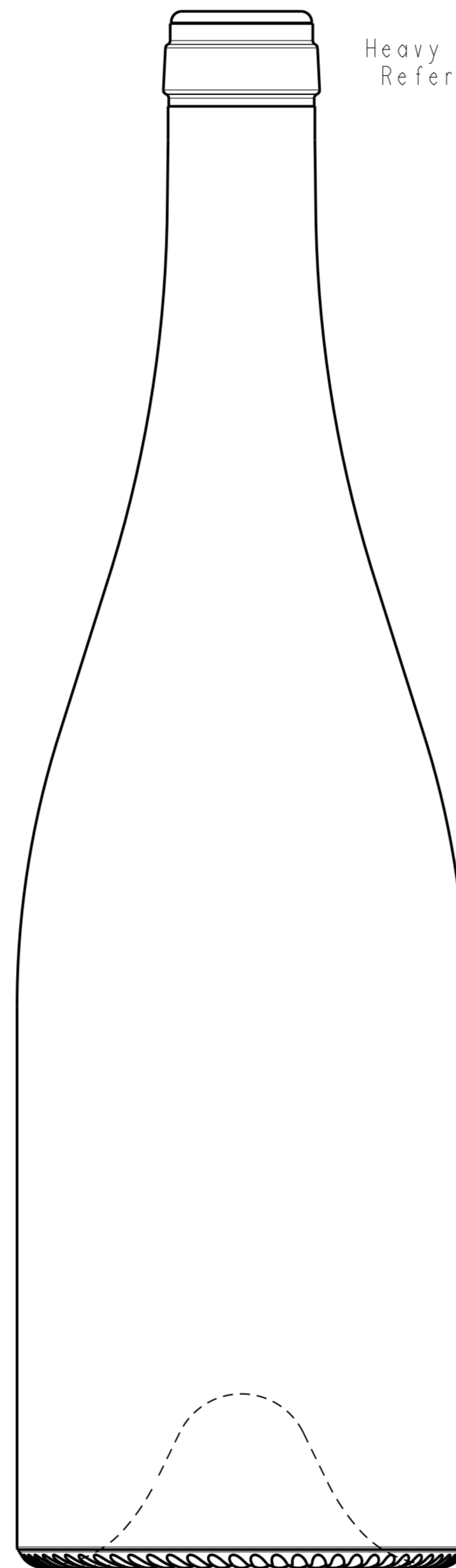
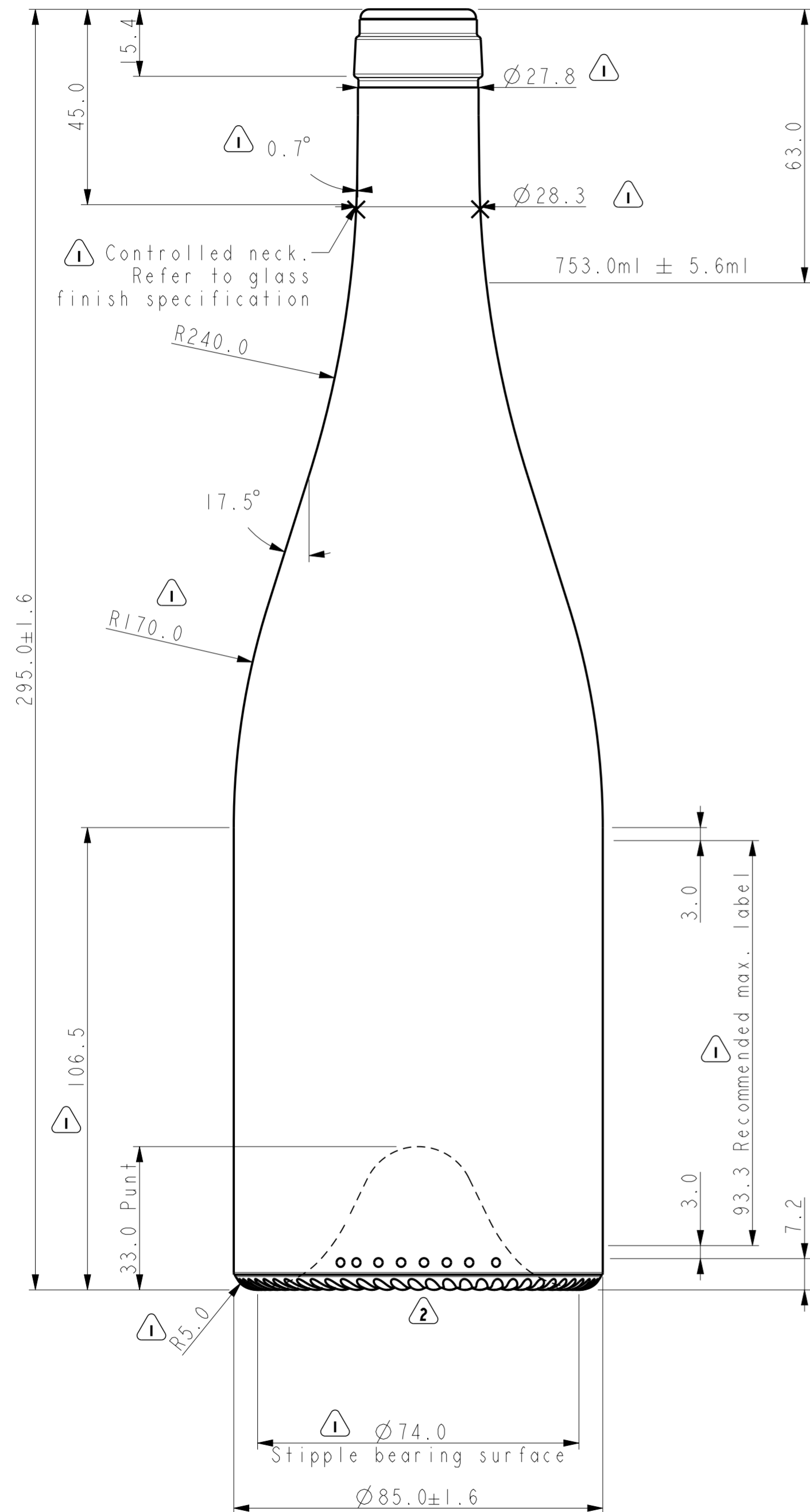




FOR A BETTER WORLD



Note:
This container has a 2.0 max. Gas Volume rating for arctic blue only

COPYRIGHT VISY GLASS. MUST NOT BE COPIED IN WHOLE OR PART WITHOUT WRITTEN PERMISSION FROM VISY. THIS DRAWING CONTAINS INFORMATION WHICH IS CONFIDENTIAL TO VISY AND MUST BE USED ONLY AS DIRECTED BY VISY. THIS DRAWING MUST NOT BE DISCLOSED TO ANYONE WITHOUT THE WRITTEN CONSENT OF VISY. CUSTOMER HEREBY INDEMNIFIES AND HOLDS VISY HARMLESS FOR ANY LOSS, DAMAGE OR LIABILITY WHICH VISY MAY INCUR IF THE DESIGN, MANUFACTURE AND SUPPLY OF THE CONTAINERS IN ACCORDANCE WITH THE INSTRUCTIONS OR REQUIREMENTS OF CUSTOMER INFRINGES THE INTELLECTUAL PROPERTY RIGHTS OF ANY THIRD PARTY.

SPECIFICATION AGREEMENTS ARE BASED ON TOLERANCED DIMENSIONS ONLY. ALL DIMENSIONS IN MILLIMETRES (mm).

EQUIVALENT		
MOULD EQUIPMENT ORDERED BY:		
PLANT	A05	
N.P.D. PROJECT NUMBER NPD1473	SCALE 1:1	
VACUITY 2.7%	TILT ANGLE PREDICTED: 20.4° VERIFIED:	
SURFACE TREATMENT PERMANENT	BRIMFUL VERIFIED NO	
MINIMUM THROUGH BORE 17.5 mm		
CONTAINER OVERFLOW CAPACITY (BRIMFUL)		
773.5ml Approx.		
CONTAINER RATED CAPACITY (FILL CAPACITY)		
753.0ml ± 5.6ml		
CONTAINER WEIGHT		
565g		
FINISH DESIGNATION	MAX. GAS VOLUME	
CM-C001A-AP01 [GCM-39197]	0.0 See Note	
PROCESS	RETURNABLE	DESIGN REF.
B&B	NO	563427-WS

Stock
750ml Project Corker

No	DATE	REVISIONS	DESIGN/CHECK
2	17 Nov 20	CID Dots Added	AA/GW
1	28 Jul 20	Was 1.5°, 29.9mm, 31.0mm, 67.0mm, 105.6mm, 92.4mm, 776.5ml, CM-29_32_AP01, GCM-66390, bar stipples, 4mm, 77.1mm, added controlled neck note and GT-2 Stipple.	TT/AA

DESIGNER	T Tran	DATE	01 Jul 20
CHECKED	S Bunjamin	DATE	01 Jul 20
DRAWING NUMBER	563427-WS	MOULD NUMBER	563427