

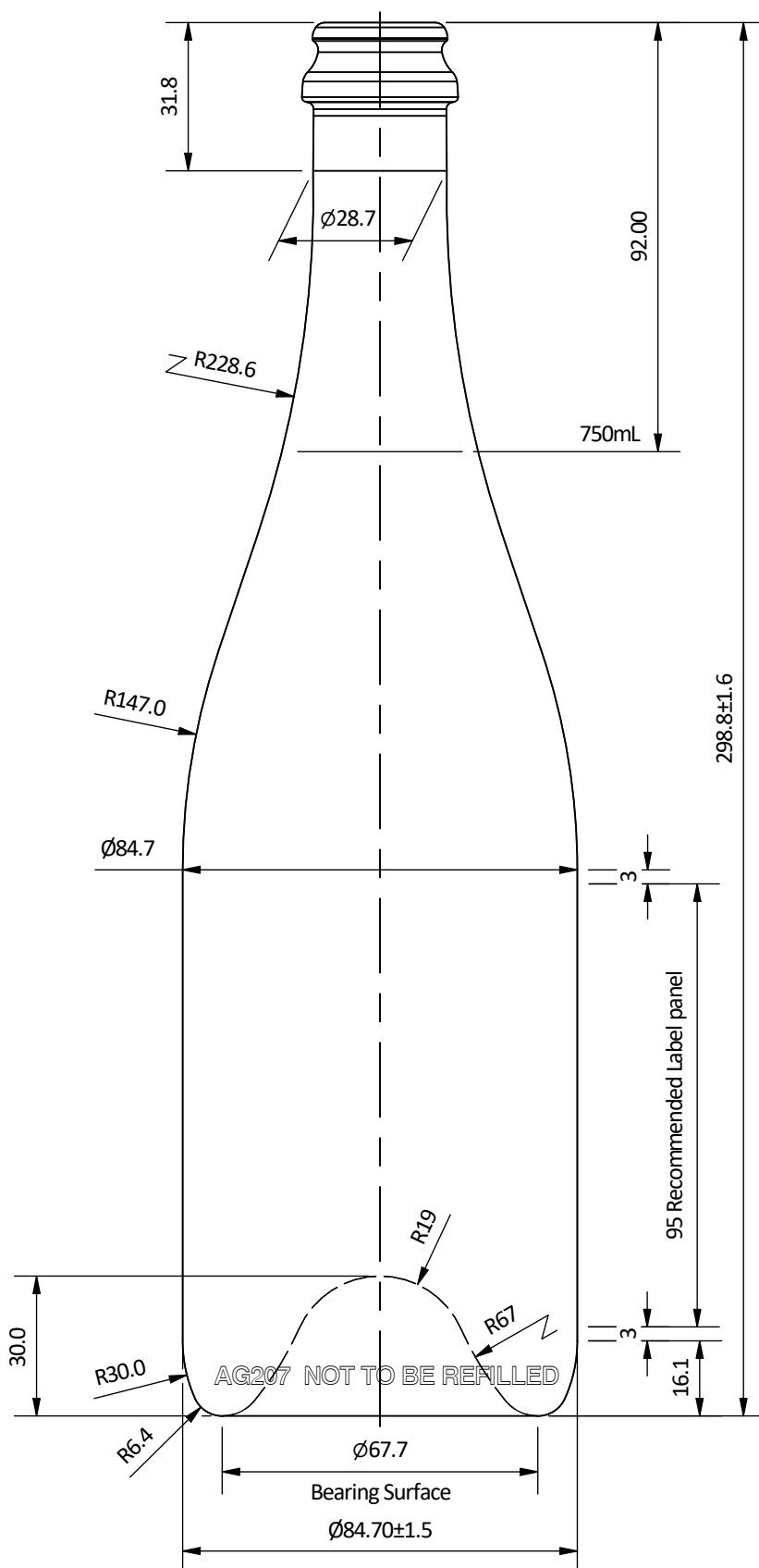
CUSTOMER APPROVAL

Cust Name	
Cust Signature	
Approval Date	

Customer Capacity	750mL
Fill Point Volume	753mL + 5.5mL/-3.0mL Nom @ 89mm
Brimful Volume	795mL Nom
Weight	580g
Max. Gas Volumes	5*
Tilt Angle	19.5°
Process	BB

*Gas rating does not apply to bottles with ACL or screen printed labels

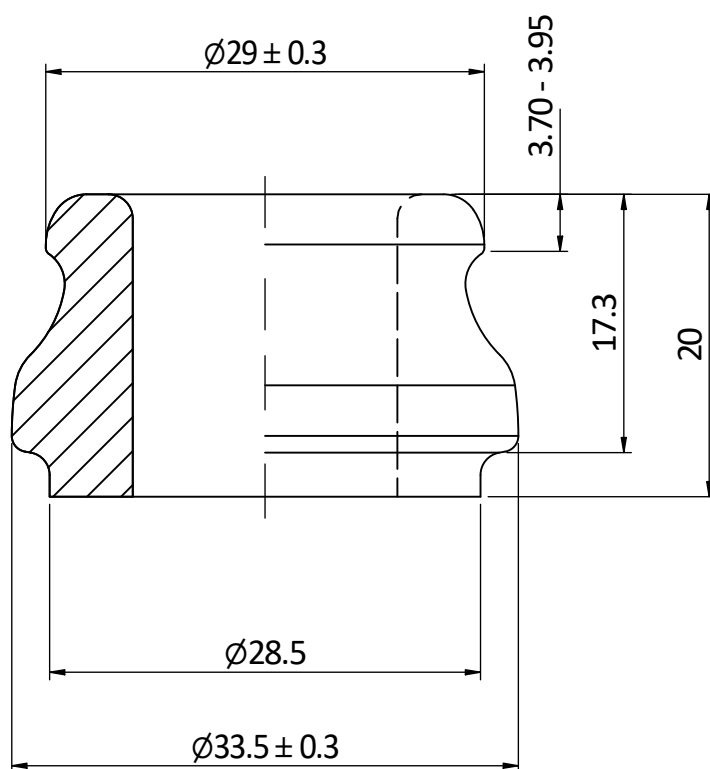
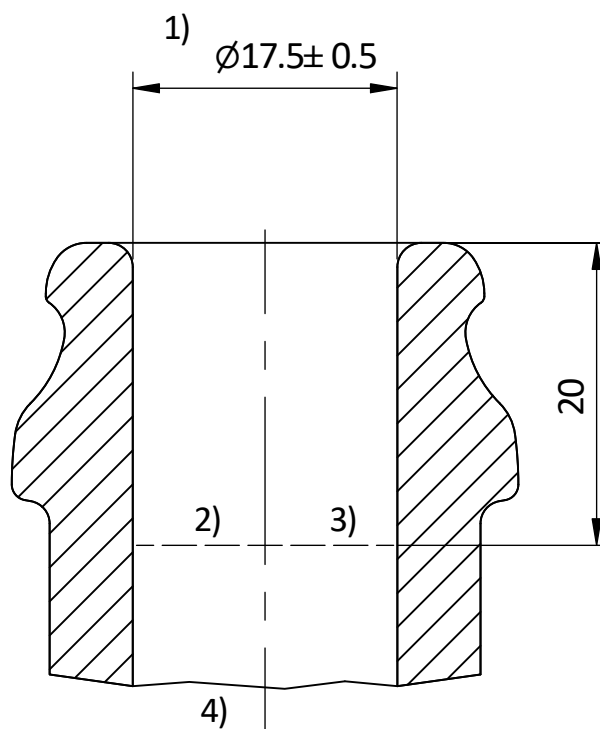
The WPA recommend that the label should be positioned at a minimum of 5mm above the bottom of the designated label panel and a minimum of 5mm below the top of the designated label panel with a maximum label height that is equal to or less 10mm than is shown as the designated label panel height on the glass drawing



Customer Specifications - Orora Glass



Number AG207_C12	B		
Description 750mL Sparkling	A		
Date & Revision 16/11/2020 Initial	Initial	Based off SD26_20_C12	16/11/2020
Finish C12 - Heavyweight Crown Cork Mouth	Rev	Description	Date



BORE CONTROL

1. Mean bore entry is measured at 5mm from the top
2. Mean bore diameter at 10 mm is to be no larger than 1.0 mm greater than that at entry
3. Mean diameter at 20mm is not to be greater than 19mm
4. The mean bore diameter for 20mm must not be smaller than the bore at entry
5. The minimum through bore diameter is 16.8 mm

Customer Specifications - Orora Glass



Finish Number C12

Description Heavyweight Crown Cork Mouth Finish

Date & Revision 17/08/2009 Initial Issue